

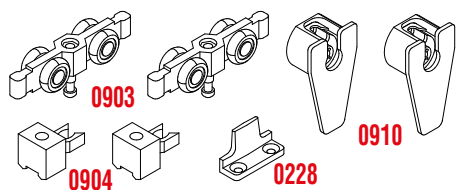
SERIE 900 Top ante sovrapposte

SERIES 900 Top overlapping doors

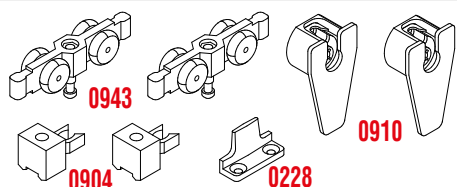


Sistemi scorrevoli per mobili / Sliding systems for furniture

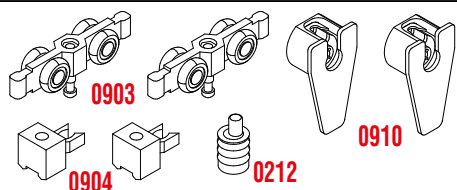
KIT 0903-228 - MAX 30 KG



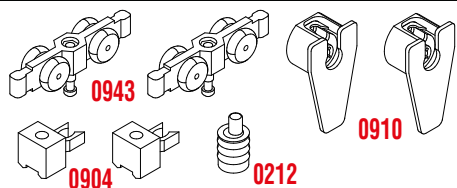
KIT 0943-228 - MAX 20 KG



KIT 0903-212 - MAX 30 KG



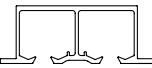

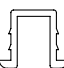
KIT 0943-212 - MAX 20 KG

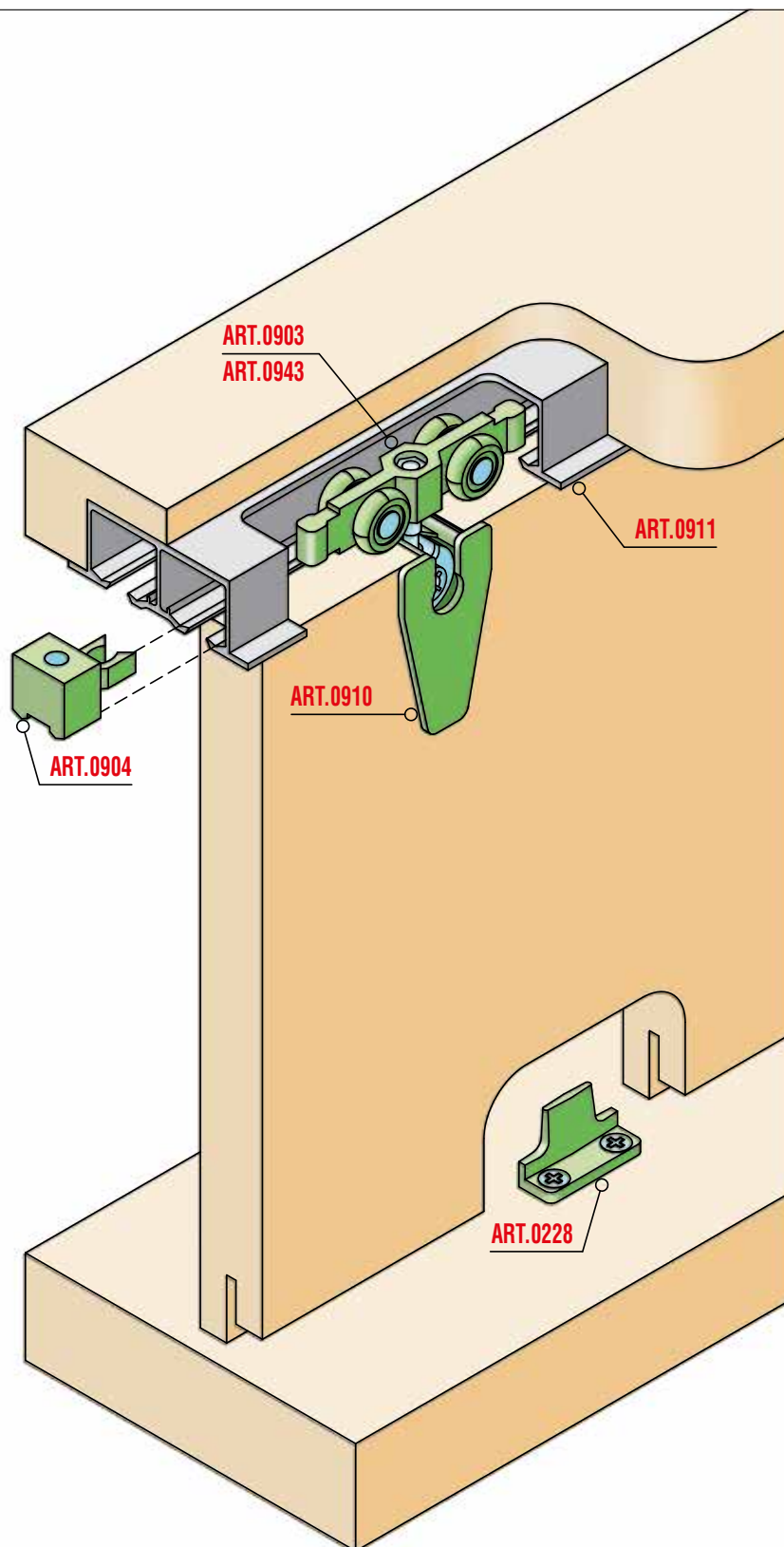


Legenda KIT / Kit Legend

0903	Carrello superiore con cuscinetti <i>Upper truck with ball bearing</i>
0943	Carrello superiore con rulli <i>Upper truck with roller</i>
0904	Fermo superiore <i>Upper stopper</i>
0910	Giunzione per anta legno <i>Joint for wooden door</i>
0228	Scivolo inferiore <i>Lower slide</i>
0212	Guida inferiore eccentrica <i>Lower eccentric runner</i>

Legenda altri componenti *Legend other items*

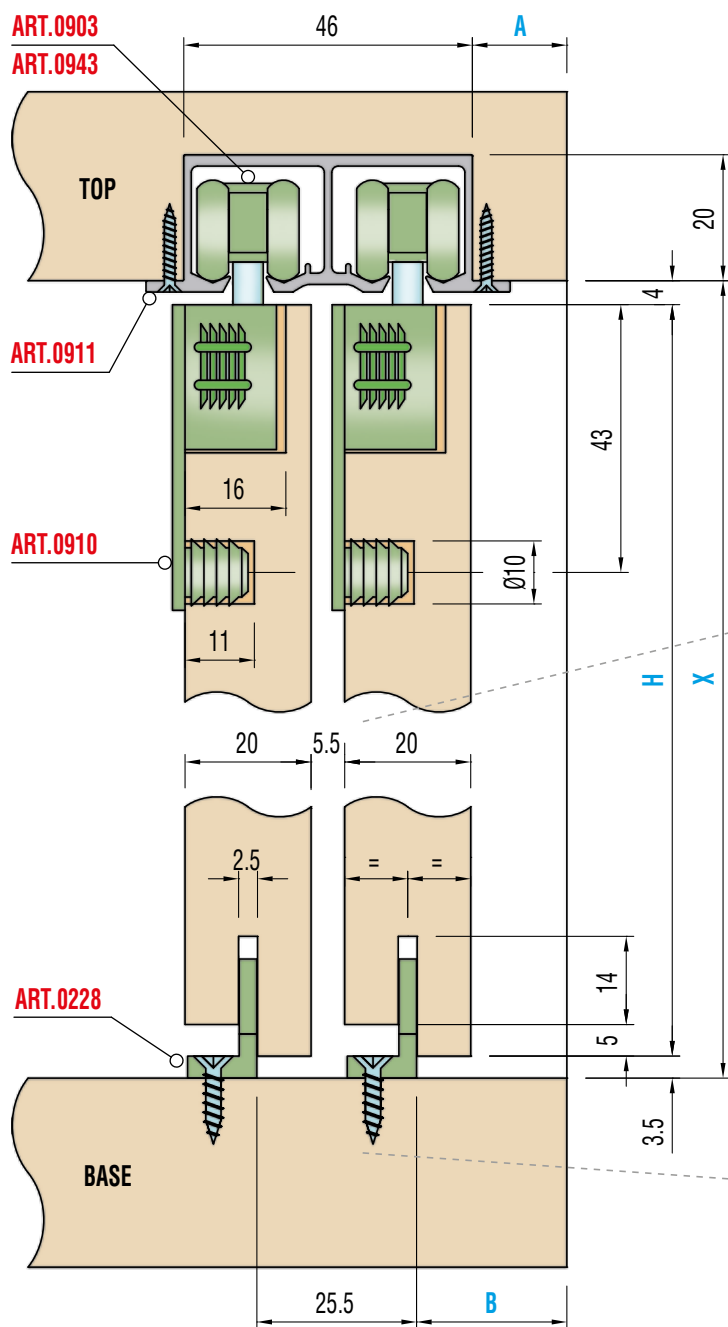
0911		Profilo alluminio superiore per ante sovrapposte <i>Upper aluminium profile for overlapping doors</i>
0909		Tappo terminale per ART.0900 <i>End plug for ART.0900</i>
0211		Profilo plastica inferiore <i>Lower plastic profile</i>





Sistemi scorrevoli per mobili / Sliding systems for furniture

Sezione verticale / Vertical section

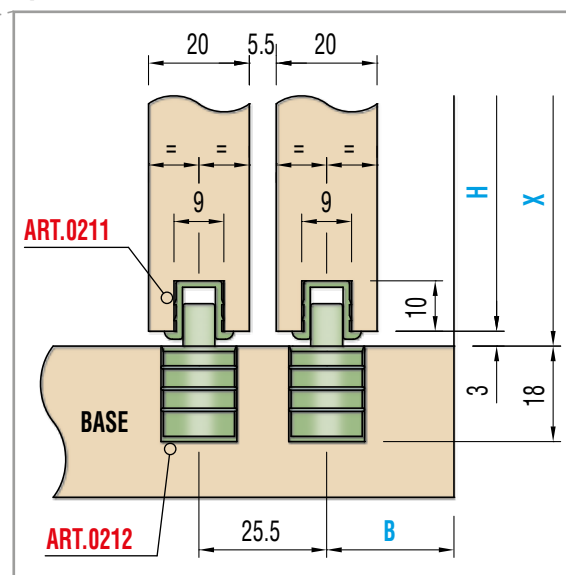


Peso massimo anta Kg. 30
Maximum door weight Kg. 30

A =	min. 15
B =	A + 8,5
H =	X - 7,5

S* (spessore / thickness)
min. 20 mm.

Variante Special version



A =	min. 15
B =	A + 10,5
H =	X - 7

S* (spessore / thickness)
min. 20 mm.

Schema Foratura ante / Doors drilling

